



SCHOOL DISTRICT
OF SPRING VALLEY

PRSR STD
ECRWSS
U.S. POSTAGE
PAID
EDDM RETAIL

▶ VOTE APRIL 2ND

SCHOOL BOARD MEMBERS

- Peter Coyne, President
- Bobbie Jaeger, Vice President
- Allan Faber, Treasurer
- Brian Wang, Clerk
- Guy Leach, Member
- Andy Johansen, Member
- Matthew Schreiber, Member

Local
Postal Customer



SCHOOL DISTRICT OF SPRING VALLEY
REFERENDUM 2019

▶ VOTE APRIL 2ND

QUESTION ON BALLOT

Shall the School District of Spring Valley, Pierce, St. Croix and Dunn Counties, Wisconsin be authorized to issue pursuant to Chapter 67 of the Wisconsin Statutes, general obligation bonds in an amount not to exceed \$22,800,000 for the public purpose of paying the cost of constructing and equipping a new elementary school on District-owned land, tearing down the current elementary school, relocating the softball field and completing related site improvements?

LEARN MORE ABOUT THE REFERENDUM

February Open House:
Date: Monday, February 25th, 2019
Time: 6:00pm
Location: Spring Valley Middle/High School LMC

March Open House:
Date: Tuesday, March 19th, 2019
Time: 6:00pm
Location: Spring Valley Middle/High School LMC

Follow us on Social Media!
www.springvalley.k12.wi.us
www.facebook.com/springvalleyschools



SCHOOL DISTRICT OF SPRING VALLEY
REFERENDUM 2019

Dear Community Member,

Over the past several years, the Board of Education has been working towards a solution to address our aging Elementary School Facility. We hired experts to assess the facility in terms of physical conditions as well as educational environment. Several major concerns, including structural integrity of the facility, an inability to expand any further, and general concern for the types of learning spaces available to our students came up during this assessment. We then worked to create several concepts as to how to address these needs and assigned them monetary values. It was from these concepts that we were able to conduct a formal survey of our community to help determine what direction we should move forward with.

The survey yielded overwhelming support to move ahead with a referendum to construct a new elementary school (including additional gymnasium space) at the current middle/high school site. **On Monday, January 7th, the Board of Education adopted a resolution to go to a \$22.8m referendum.**

Over the next several months, we encourage you to keep an eye open for information on the referendum and to attend open houses. Please contact us with any questions you may have.

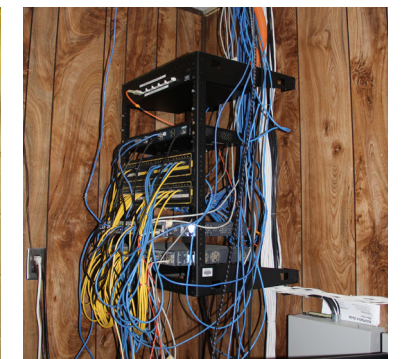
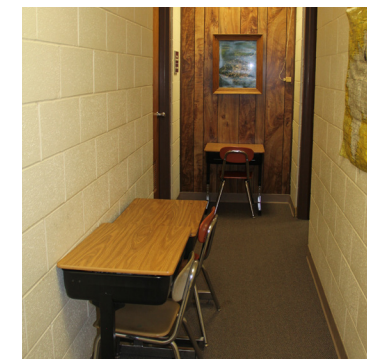
Thank you for your time considering the future of our district. We welcome any comments and look forward to seeing you at one of the open houses.

REFERENDUM FACTS

QUESTION ON BALLOT

Shall the School District of Spring Valley, Pierce, St. Croix and Dunn Counties, Wisconsin be authorized to issue pursuant to Chapter 67 of the Wisconsin Statutes, general obligation bonds in an amount not to exceed \$22,800,000 for the public purpose of paying the cost of constructing and equipping a new elementary school on District-owned land, tearing down the current elementary school, relocating the softball field and completing related site improvements?

▶ VOTE APRIL 2ND





SCHOOL DISTRICT OF SPRING VALLEY REFERENDUM 2019

EXISTING BUILDING CONDITIONS:

- Originally built in 1929
- Has had three additions and is landlocked making further additions very difficult and expensive
- School entries need improved security
- Drop-off / pick-up area has student and vehicular safety concerns
- Due to limited outdoor recess space, Sabin Street is closed during school hours
- Major building systems including plumbing, heating/ventilation and electrical, are past their service life and need to be replaced
- Classroom floors, lighting, ceiling and cabinetry are in need of replacement
- Building exteriors, including single-pane windows, roofing, and worn/rusting doors need repair or replacement
- Sections of facility are poorly insulated
- Facility requires update to be compliant with the Americans with Disabilities Act (ADA)
- Foundation is cracking and settling inconsistently, causing structural concerns and water infiltration/flooding issues.

SURVEY RESULTS:

Overwhelming support to:

- ▶ Build a new elementary school
- ▶ Build this new facility on the middle/high school campus
- ▶ Expand the gymnasium space at the new school to address the shortage of gym space in the district and community.

Please visit the district website for complete survey results. www.springvalley.k12.wi.us/news/what_s_new/community_survey_results

WHAT'S THE PLAN?

- New Elementary School appropriately sized for current enrollment of approximately 400 students
- Academic wings would be designed for future expansion
- House grades: 4K - 5th
- Safer and more secure entryway
- Controlled student drop-off / pick-up
- Dedicated playgrounds with age appropriate equipment
- Expanded gymnasium for district and community use

TIMELINE?

Referendum Voting is April 2, 2019. If the referendum passes, we would begin the design process and would hope to break ground in the early spring of 2020.



TAX IMPACT:

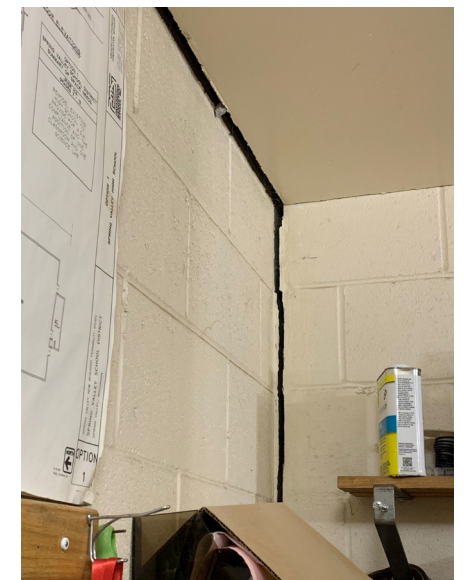
\$22,800,000 Borrowing
Estimated Tax Increase over 2019-20 taxes

Fair Market Property Value:	Annual	Per Month
\$100,000	\$170.00	\$14.17
\$150,000	\$255.00	\$21.25
\$200,000	\$340.00	\$28.33

Prepared by Robert W. Baird
Phased borrowings with estimated interest rate of 4.25 - 4.50%.

Mill rate based on 2018 Equalized Valuation with annual growth of 2.00%.

Note: Planning estimates only. Significant changes in market conditions will require adjustments to current financing plan. Rates subject to change.



▶ VOTE APRIL 2ND